

# ROBIN<sup>®</sup> 600 LEDWash

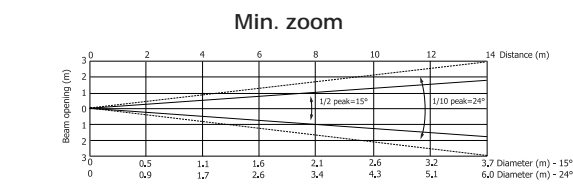
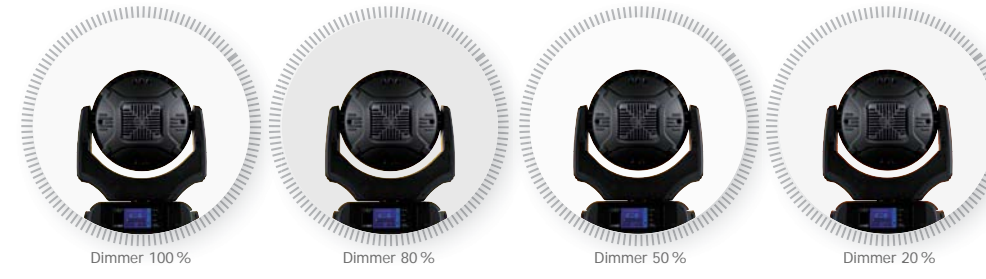
The super-slim ROBIN LEDWash 600 features 37x 10 Watt RGBW multichip LEDs with colour output ranging from gentle pastels to the richest saturation. Arranged in 3 concentric rings these LEDs offer unique possibilities for creating stunning colour and pattern audience blinding effects as well as for providing comprehensive and perfectly even wash coverage. This system sets the LEDWash 600 ahead of any other LED wash light products, making it a truly, "multi-purpose" unit, equipped also with an extremely versatile 15–45 degree motorised zoom, powerful fast strobing and pre-programmed pulse strobe effects.



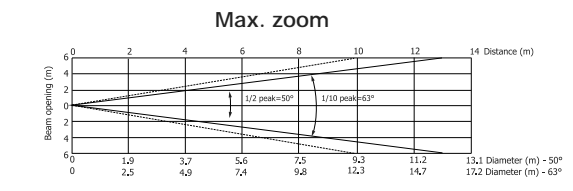
## Technical Specification

- 37x 10W RGBW LED mutichips
- Led Life Expectancy: 50.000 hours
- Typical Lumen Maintenance: 70% @ 50.000 hours
- Linear motorized zoom: 15° – 45°
- RGBW colour mixing, CTO
- Built-in colour macros
- High resolution dimmer 0–100%
- Strobe effect with variable speed
- Pre-programmed random strobe pulse-effects
- DMX channels: 37/21/15/11
- 4 DMX protocol modes
- 3-editable programs, each up to 100 steps
- Ethernet port: Art-Net protocol, ready for ACN
- Data in/out: Locking 3-pin & 5-pin XLR
- RNS2 - Robe Navigation System with LCD touchscreen and battery backup, gravitation sensor for auto screen positioning and operation memory service log with RTC
- Communication protocols: USITT DMX-512, ArtNet, MA Net, MA Net2, RDM
- Electronic auto ranging power supply, 100 – 240V AC, 50/60 Hz
- Power consumption: 400VA
- Pan and Tilt movement range: 540° / 300°; resolution: 8 or 16 bit
- Mounting points: 2 pairs of 1/4-turn locks

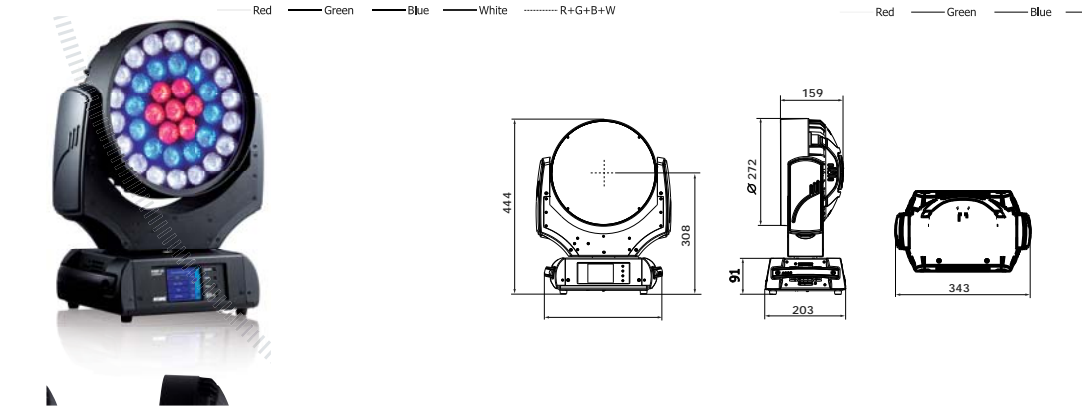
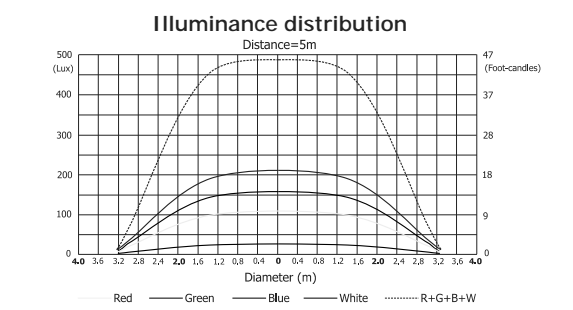
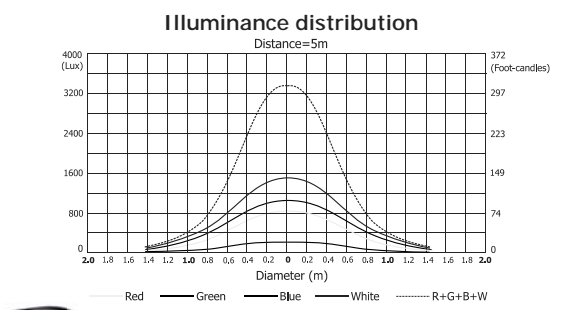
# Fine touch features



Distance (m)	2	4	5	6	8	10	12	14	
Red	3811/761	958/99	613/57	426/46	240/22	153/14	106/10	78/7	Intensity (center) lumens/candela
Green	6759/629	2194/152	1394/101	793/78	423/40	271/25	180/18	138/13	
Blue	1388/128	322/36	206/19	143/13	81/8	52/5	36/3	26/2,4	
White	958/987	2387/222	1528/142	1061/99	597/56	382/36	262/25	195/18	
R+G+B+W	2887/1578	5218/485	3348/310	2319/214	1305/122	835/79	580/54	426/40	



Distance (m)	2	4	5	6	8	10	12	14	
Red	544/51	136/13	87/8	60/6	34/3	22/2	15/1,4	11/1	Intensity (center) lumens/candela
Green	1031/96	258/24	165/15	115/11	65/6	41/4	28/3	21/2	
Blue	200/19	50/5	32/3	22/2	13/1,2	8/0,7	6/0,5	4/0,4	
White	1338/124	334/31	214/20	149/14	84/8	54/5	37/4	27/2,5	
R+G+B+W	3338/302	799/71	486/45	338/31	190/18	122/11	84/8	62/6	





**MULTI  
CHIP**  
LED TECHNOLOGY

**ZOOM**  
15° - 60°

**FLAT & EVEN  
LIGHT BEAM**

### Accessories

Standard omega brackets for two clamps



Optional single omega bracket for one clamp



Optional Top-Hat



### Packaging

Cardboard



Single Top Loader Case  
ROBIN 600 LEDWash™



Dual Top Loader Case  
ROBIN 600 LEDWash™



Quad Top Loader Case  
ROBIN 600 LEDWash™



Hexa Top Loader Case  
ROBIN 600 LEDWash™



### Exterior dimensions

360 x 390 x 500 mm  
(14.2" x 15.3" x 19.7")

440 x 380 x 590 mm  
(17.3" x 15.0" x 23.3")

580 x 410 x 670 mm  
(22.8" x 16.2" x 26.4")

580 x 800 x 670 mm  
(22.8" x 31.5" x 26.4")

580 x 1180 x 670 mm  
(22.8" x 46.5" x 26.4")

**ROBIN**  
Innovative Technology

[www.robe.cz](http://www.robe.cz)

**ROBE**

Head office: ROBE lighting s. r. o. | Házovice 2090 | 756 61 Rožnov pod Radhoštěm | Czech Republic | Tel.: +420 571 751 500 | Fax: +420 571 751 515 | E-mail: robe@robe.cz  
 Factory: ROBE lighting s. r. o. | Palackého 416 | 757 01 Valašské Meziříčí | Czech Republic | Tel.: +420 571 751 500 | Fax: +420 571 751 515 | E-mail: robe@robe.cz | UK: ROBE UK Ltd. | Northampton, UK | Tel.: 01604 741000 | E-mail: info@robeuk.com | America: ROBE Lighting Inc. | 12349SW 53<sup>rd</sup> Street, Suite 202 | Cooper City | FL, USA | Tel.: +1 954 680 1901 | E-mail: info@robelighting.com  
 South-East Asia: ROBE S.E.A. | Singapore | Tel.: +65 8118 6665 | E-mail: info@robe-sea.com | United Arab Emirates: Makateb Business Centre | Makeen Tower, Corner of 9th and 10th Street Abu Dhabi | UAE | Tel.: +971 2 657 3461 | E-mail: info@robe-me.com | Russia and CIS: Taganskaya str. 26 - 1 - 72 | 109004 Moscow | Russia | Tel.: +7 495 504 9569 | E-mail: info@roberussia.com  
 Central and South America: Galicia 1200 ap 303 | 1100 Montevideo | Uruguay | Tel.: +5982 2900 67 47 | E-mail: info@robecca.com

April 2011 © ROBE lighting s. r. o. All specifications subject to change without notice. Patents pending.



**ROBE**



**PERFECT  
COLOUR  
MIXING**

**INDIVIDUAL  
CONTROL OF  
LED RINGS**

**TRUE  
WHITES**